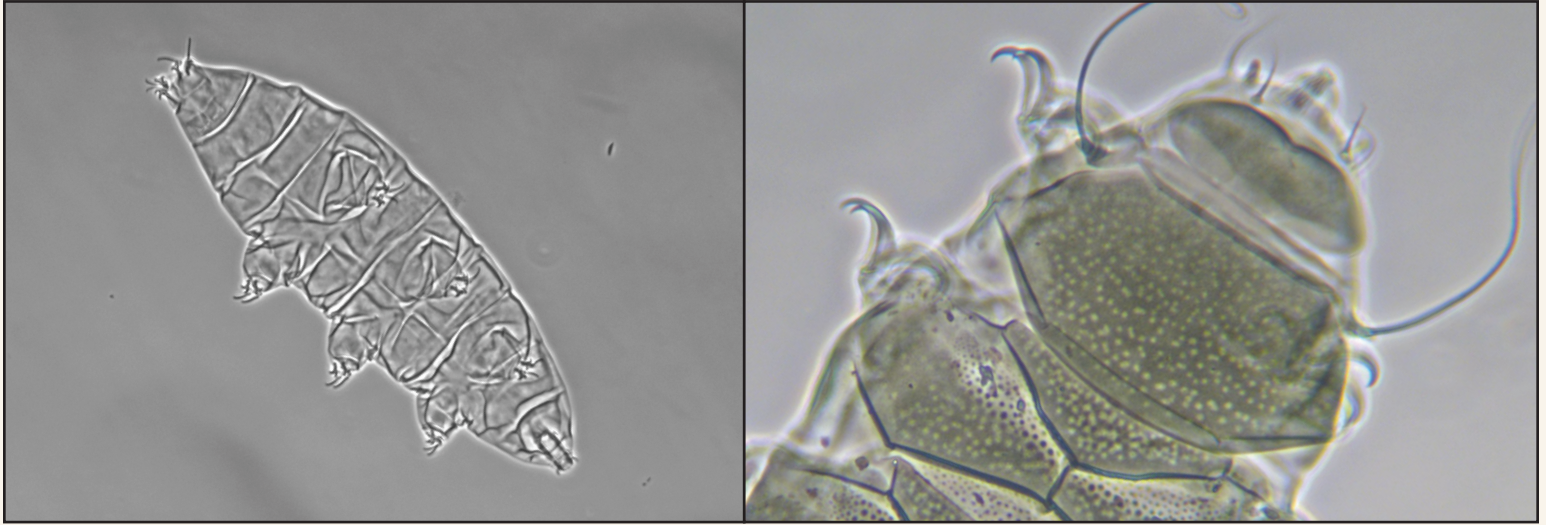




Tardigrade Biology, Ecology, Field Sampling, and Identification

July 5–11, 2026

[REGISTER](#)[CALENDAR](#)[GENERAL INFO](#)

This field seminar is designed to help naturalists of all skill levels learn about tardigrades. Tardigrades are all around us in Maine. You will learn how to sample for tardigrades from substrates around us and how to identify them. We will show you how to sample moss, lichen, leaf litter, and the other habitats around the station. We will then discuss the different ways to find and extract the tardigrades from each of these samples. In the lab we will observe the tardigrades with microscopes and make temporary and permanent mounts of them. We will discuss the features of tardigrades that are taxonomically important and together we will identify the tardigrades around the field station. Once we have covered the basic skills you will have time to learn more about the tardigrades that you are most interested in.

Dr. Emma Perry (emma.perry@maine.edu) of the University of Maine, completed her undergraduate degree in Biology at Exeter University, Britain, where she was born and raised. For her senior thesis, she studied habitat preference by the burrowing brittle star *Acrocnida brachiata*. After graduation, she moved to Tampa, Florida to do a Ph.D. on echinoderms with Dr. J. Lawrence and Dr. L. Robbins. She became interested in the process by which echinoderms, especially sand dollars, constructed their intricate three-dimensional skeletons. Since then, she has become more generally interested in the biology and systematics of lesser known marine invertebrates, especially tardigrades.